

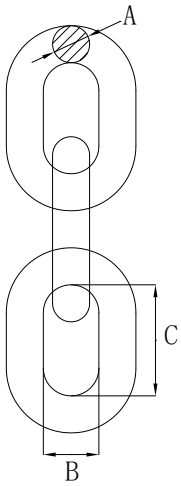
G100

RIGGING

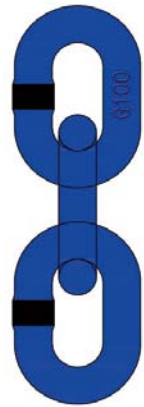
With Product Warning And Application Information

G100 RIGGING

G100

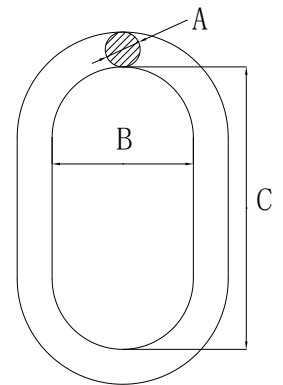


	T				KG
		A	B	C	
KLR-731-6	1.4	6	8.7	18	0.81
KLR-731-7	1.9	7	9.5	21	1.11
KLR-731-8	2.5	8	10.9	24	1.49
KLR-731-10	4	10	13.5	30	2.28
KLR-731-13	6.7	13	17.5	39	3.86
KLR-731-16	10	16	21.5	48	5.75
KLR-731-20	16	19	25.6	57	8.96
KLR-731-22	19	22	29.5	66	11.05
KLR-731-26	26.5	26	33.8	78	15.1
KLR-731-32	39.3	32	41.6	96	23.2



G100

	T				KG
		A	B	C	
KLR-701-2.3	2.3	13	60	110	0.34
KLR-701-3.5	3.5	16	60	110	0.53
KLR-701-5	5	18	75	135	0.86
KLR-701-7.6	7.6	23	90	160	1.6
KLR-701-10	10	27	100	180	2.46
KLR-701-14	14	33	110	200	4.14
KLR-701-25.1	25.1	36	140	260	6.22
KLR-701-30.8	30.8	45	180	340	12.85
KLR-701-40	40	50	190	350	16.22



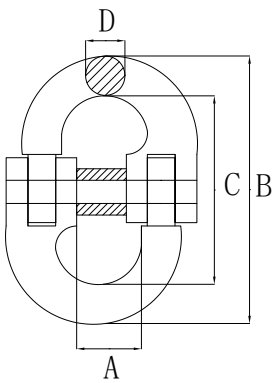
WARNING

Never exceed Working Load Limit

G100 RIGGING

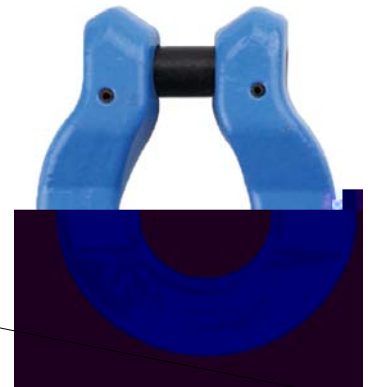
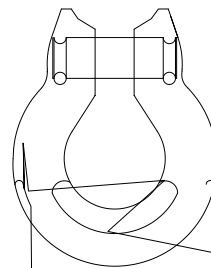


G100



		T					KG
			A	B	C	D	
KLR-702-6	6-10	1.4	14	60	44.5	7.6	0.1
KLR-702-8	8-10	2.5	18.5	84.5	61.5	10	0.22
KLR-702-10	10-10	4	23	97.2	72	12.6	0.45
KLR-702-13	13-10	6.7	27.5	127	89	16.8	1.15
KLR-702-16	16-10	10	33.5	145	103	21	1.75
KLR-702-20	20-10	16	42	175	116	24.5	2.7
KLR-702-22	22-10	19	48	193	135	27	4.02
KLR-702-26	26-10	26.5	61	228	164	32	5.1
KLR-702-32	32-10	39.3	80	274	194	40	8.5

Fatigue tested at 1.5 times Working Load Limit for 20000



G100

								KG
			A	B	C	D	E	
KLR-703-6	6-10	1.4	8.5	44	20	25	55	0.12
KLR-703-8	8-10	2.5	10.5	60	24	35	73.5	0.27
KLR-703-10	10-10	4	12.5	70	31	40.5	90	0.44
KLR-703-13	13-10	6.7	16	90	38.5	54	109	0.89
KLR-703-16	16-10	10	19	112	51	64	141.5	1.69

Never exceed Working Load Limit

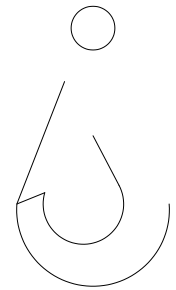
WARNING

G100 RIGGING



G100 EYE SELFLOCK HOOK G100

								KG
			A	B	C	D	E	
KLR-704-6	6-10	1.4	21	110	11	20	28	0.5
KLR-704-8	8-10	2.5	27	137	12	26	35.5	0.9
KLR-704-10	10-10	4	34.5	169	14.9	30	45	1.5
KLR-704-13	13-10	6.7	40	209	20	40.5	53.5	2.7
KLR-704-16	16-10	10	50	254	27	50.5	62	5.7
KLR-704-20	20-10	16	60	277	30	62	76.5	7.9
KLR-704-22	22-10	19	70	319.5	32	66	80	11.2



G100

							KG
			A	B	C	E	
KLR-705-6	6-10	1.4	7.5	96	20	28	0.5
KLR-705-8	8-10	2.5	9.5	123	26	35.5	0.9
KLR-705-10	10-10	4	12	144	30	45	1.6
KLR-705-13	13-10	6.7	15	182	40.5	53.5	2.9
KLR-705-16	16-10	10	17.5	217	50.5	62	5.8
KLR-705-20	20-10	16	25	235	62	76.5	8.6
KLR-705-22	22-10	19	25.5	276.5	66	80	12.1

WARNING

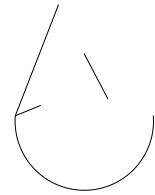
Never exceed Working Load Limit

G100 RIGGING



G100

								KG
			A	B	C	D	E	
KLR-706-6	6-10	1.4	32.5	11.5	23	172.5	28	0.6
KLR-706-8	8-10	2.5	36	13	28	216	35.5	1.1
KLR-706-10	10-10	4	42	15.5	35	253.5	45	2.0
KLR-706-13	13-10	6.7	50	17	40	313	53.5	4.0
KLR-706-16	16-10	10	61	21.5	56	391.5	62	6.8
KLR-706-20	20-10	16	72	26	62	437	76.5	12.5
KLR-706-22	22-10	19	97	33	94	539	80	17.1



G100

							KG
			A	B	C	E	
KLR-715-6	6-10	1.4	8	32.5	79	8.5	0.26
KLR-715-8	8-10	2.5	9.5	35	95.5	9.8	0.41
KLR-715-10	10-10	4	13	43.5	135.5	13	0.92
KLR-715-13	13-10	6.7	16	59	162	16	1.65

Never exceed Working Load Limit

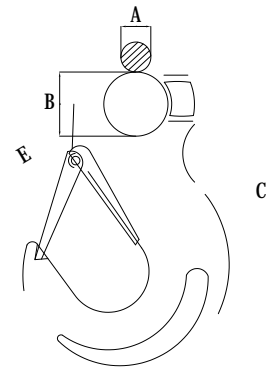
WARNING

G100 RIGGING



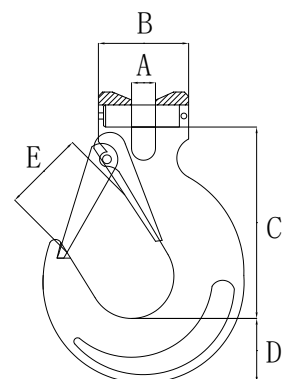
G100

		T					KG
			A	B	C	E	
KLR-707-6	6-10	1.4	10	20.5	111	18.5	0.32
KLR-707-8	8-10	2.5	11	25	137.5	25	0.6
KLR-707-10	10-10	4	16	34	171.5	28	1.2
KLR-707-13	13-10	6.7	19	43	219	38	2.2
KLR-707-16	16-10	10	24.5	50	260	44	3.5
KLR-707-20	20-10	16	27	55	298	52	7.15
KLR-707-22	22-10	19	29	60	330	66	11.5
KLR-707-26	26-10	26.5	35	70	376	73	12.2
KLR-707-32	32-10	39.3	39	81.5	458	87	17.5



G100

								KG
			A	B	C	D	E	
KLR-708-6	6-10	1.4	7.5	32	72	21	18.5	0.33
KLR-708-8	8-10	2.5	9.5	37	87	27.5	25	0.7
KLR-708-10	10-10	4	12	48	104	33.5	28	1.3
KLR-708-13	13-10	6.7	15	59	131	42	38	2.3
KLR-708-16	16-10	10	17.5	70	162	50	44	3.6
KLR-708-20	20-10	16	25	85	197	56	52	7.3
KLR-708-22	22-10	19	27	100	216	62	66	12.1



WARNING

Never exceed Working Load Limit

Never exceed Working Load Limit

G100 RIGGING

G100 RIGGING



All load pins are 110% individually inspected and 6

G100 CLEVIS LINK G100

										KG
			A	B	C	D	E	F	G	
KLR-716-13	13-10	6.7	15	90	50	16	174	93	21	1.36

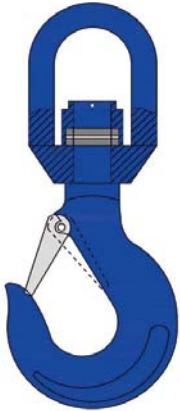


G100 CLAW WITH SHEEP HORN EYE G100

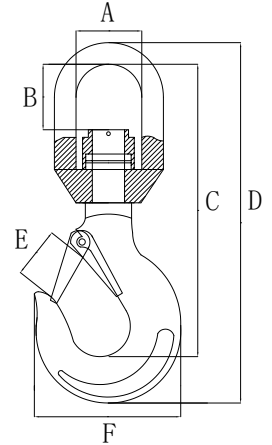
Never exceed Working Load Limit

WARNING

G100 RIGGING

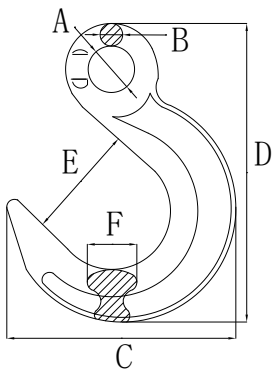


Fatigue tested at 1.5 times Working Load Limit for 20000

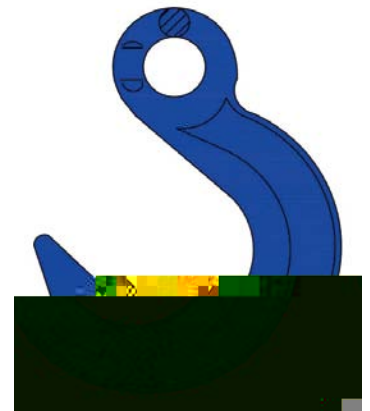


G100 SWIVEL HOOK WITH BEARING G100

		T							KG
			A	B	C	D	E	F	
KLR-782-6	6-10	1.4	32.5	37	141	173	24	77	0.65
KLR-782-8	8-10	2.5	41	41.6	171	213	28.5	88	0.95
KLR-782-10	10-10	4	48	51	216	263	34	105	1.71
KLR-782-13	13-10	6.7	55	59	253	310	40	135	3.13
KLR-782-16	16-10	10	61	68	293	364	45	161	5.44



Fatigue tested at 1.5 times Working Load Limit for 20000



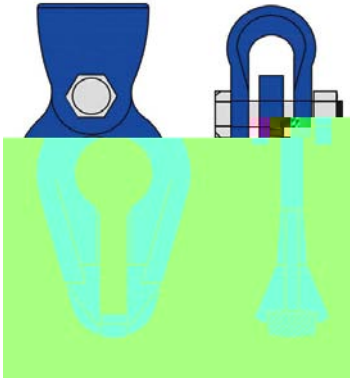
G100

		T							KG
			A	B	C	D	E	F	
KLR-786-6	6-10	1.4	20.5	10	100	133	49	17	0.382
KLR-786-8	8-10	2.5	24	12	130	158.5	62	19	0.72
KLR-786-10	10-10	4	31.5	15	152.5	199	73	25	1.25
KLR-786-13	13-10	6.7	44	19	186	241.5	90	33	2.32
KLR-786-16	16-10	10	49	22	218	279	105	37	3.45

WARNING

Never exceed Working Load Limit

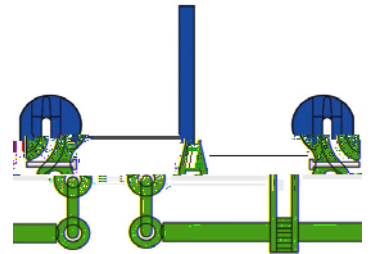
G100 RIGGING



Individually proof test at 2.5 times Working Load
 Fatigue tested at 1.5 times Working Load Limit

G100 CHAIN-ROPE CONNECTOR G100

		T								KG
			A	B	C	D	E	F	G	
KLR-717-8	8-10	2.5	58	33.5	142	10	12	20	32	0.63



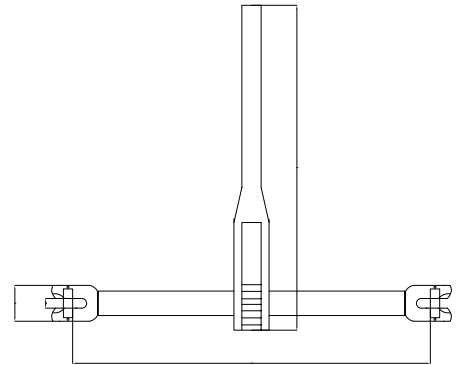
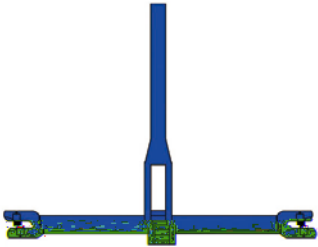
G100

		KN	KN							KG
				A	B	C	E	Lmin	Lmax	
KLR-750-8	8-10	50	100	383	50	98	10.5	340	500	3.71
KLR-750-10	10-10	80	160	390	50	121.5	13	365	525	5.85
KLR-750-13	13-10	134	268	392	72	159.5	15.5	365	525	9.34

WARNING

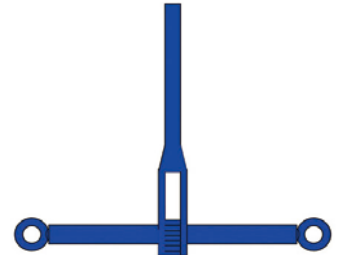
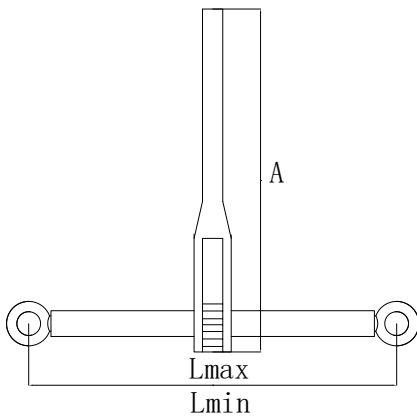
Never exceed Working Load Limit

G100 RIGGING



G100

		KN	KN						KG
				A	B	C	Lmin	Lmax	
KLR-751-8	8-10	50	100	383	10	40	340	500	3.5
KLR-751-10	10-10	80	160	390	13	49	365	525	5.5
KLR-751-13	13-10	134	268	392	16	64	365	525	7.1



G100

		KN	KN				KG
				A	Lmin	Lmax	
KLR-752-8	8-10	50	100	383	340	500	2.6
KLR-752-10	10-10	80	160	390	365	525	4.3
KLR-752-13	13-10	134	268	392	365	525	5.0

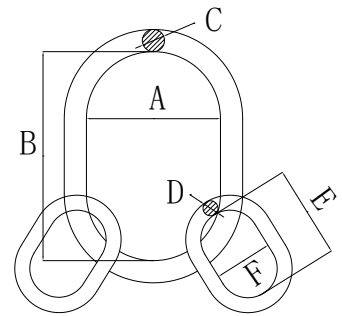
Never exceed Working Load Limit

WARNING

G100 RIGGING

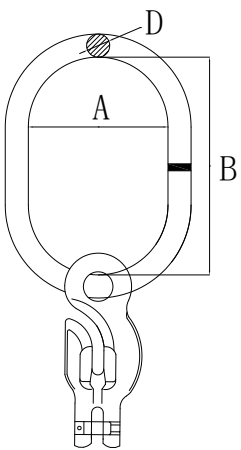


Individually proof test at 2.5 times Working Load
 Fatigue tested at 1.5 times Working Load Limit



G100

		T							KG
			A	B	C	D	E	F	
KLR-722-6	6-10	3	75	135	19	13	54	25	1.3
KLR-722-8	8-10	5.3	90	160	23	16.5	70	35	2.33
KLR-722-10	10-10	8	100	180	27	19	85	40	3.7
KLR-722-13	13-10	14	110	200	33	23	115	50	6.5
KLR-722-16	16-10	21.2	140	260	36	27	140	65	10.1
KLR-722-20	20-10	33.6	190	350	50	33	150	70	22.8
KLR-722-22	22-10	39.9	190	350	50	36	180	100	26



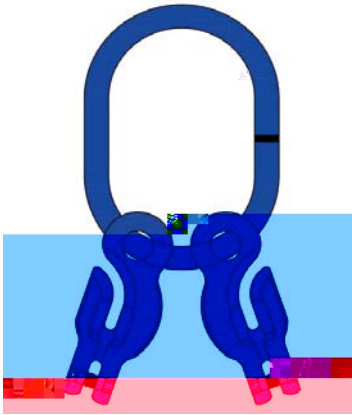
G100



WARNING

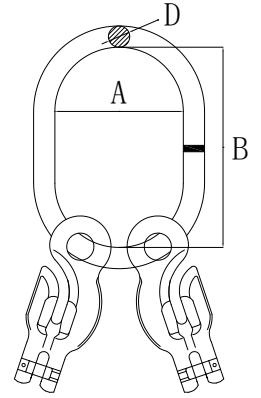
Never exceed Working Load Limit

G100 RIGGING

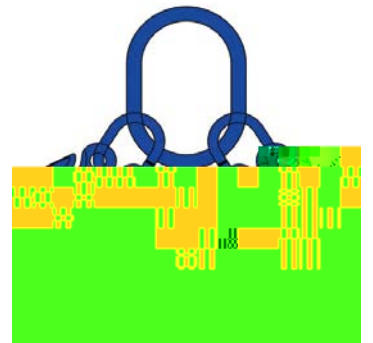
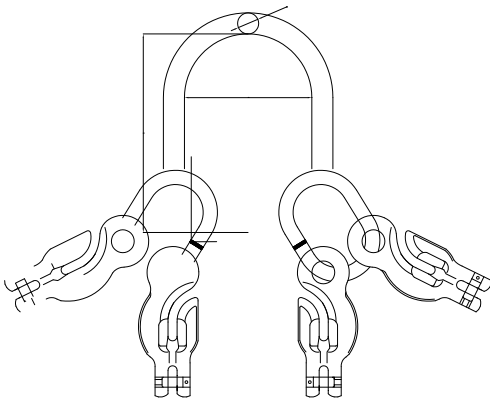


G100

Individually proof test at 2.5 times Working Load Limit.
 Fatigue tested at 1.5 times Working Load Limit for 20000



		T					KLR-714	KG
			A	B	D			
KLR-736-6	6-10	2	70	120	14		1.04	
KLR-736-8	8-10	3.55	80	140	17		2.12	
KLR-736-10	10-10	5.6	95	160	22		4.15	
KLR-736-13	13-10	9.5	110	190	25		7.0	
KLR-736-16	16-10	14	130	230	32		13.4	



Never exceed Working Load Limit

WARNING